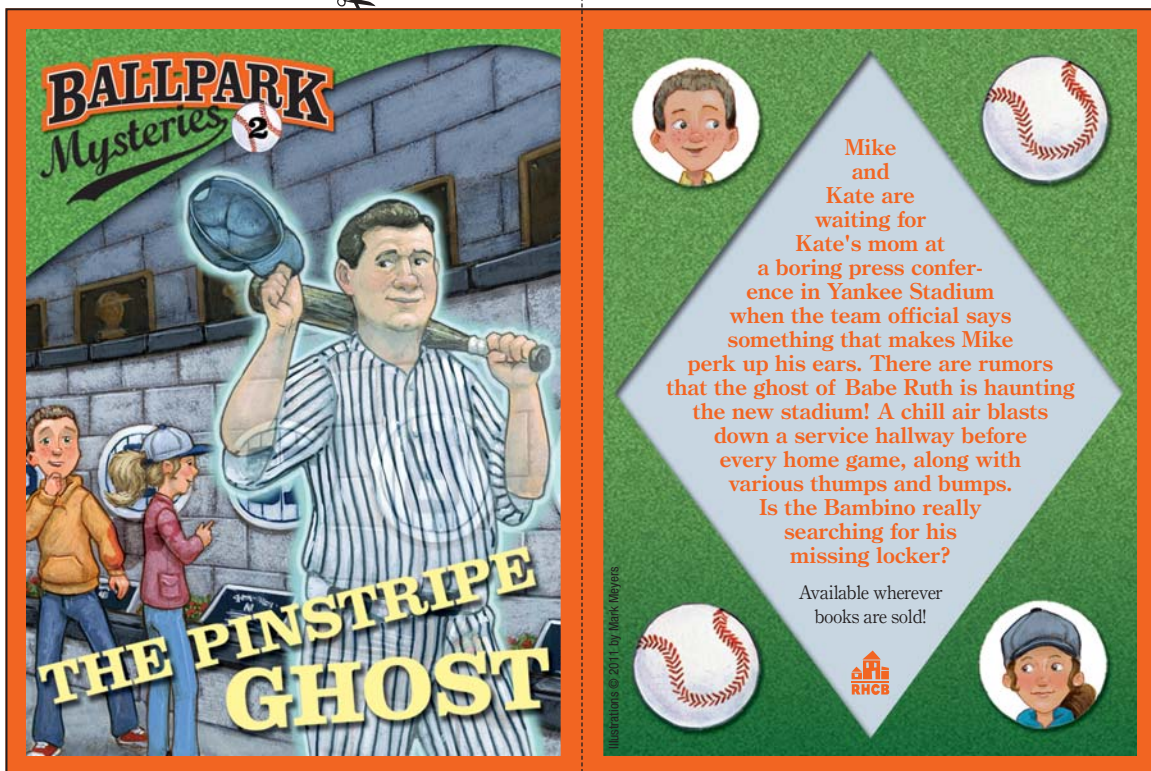


BALLPARK Mysteries

COLLECTORS' CARD

Cut along solid black line

← Fold along dashed black line



FRONT

BACK

Assembly Instructions:

1. Cut out card along solid black line.
2. Fold the card in half along dashed black line as indicated.
3. Tape along top, side and bottom of card to complete your Ballpark Mysteries Collectors' card.